



The Chestnut

4 Bedrooms
2.5 Baths
Media

2,630 s.f.



The Estates at **PALMER CREEK**



Pangea Development, LLC.

A WORLD OF DIFFERENCE

9748 Stein Road

Mascoutah, IL 62258

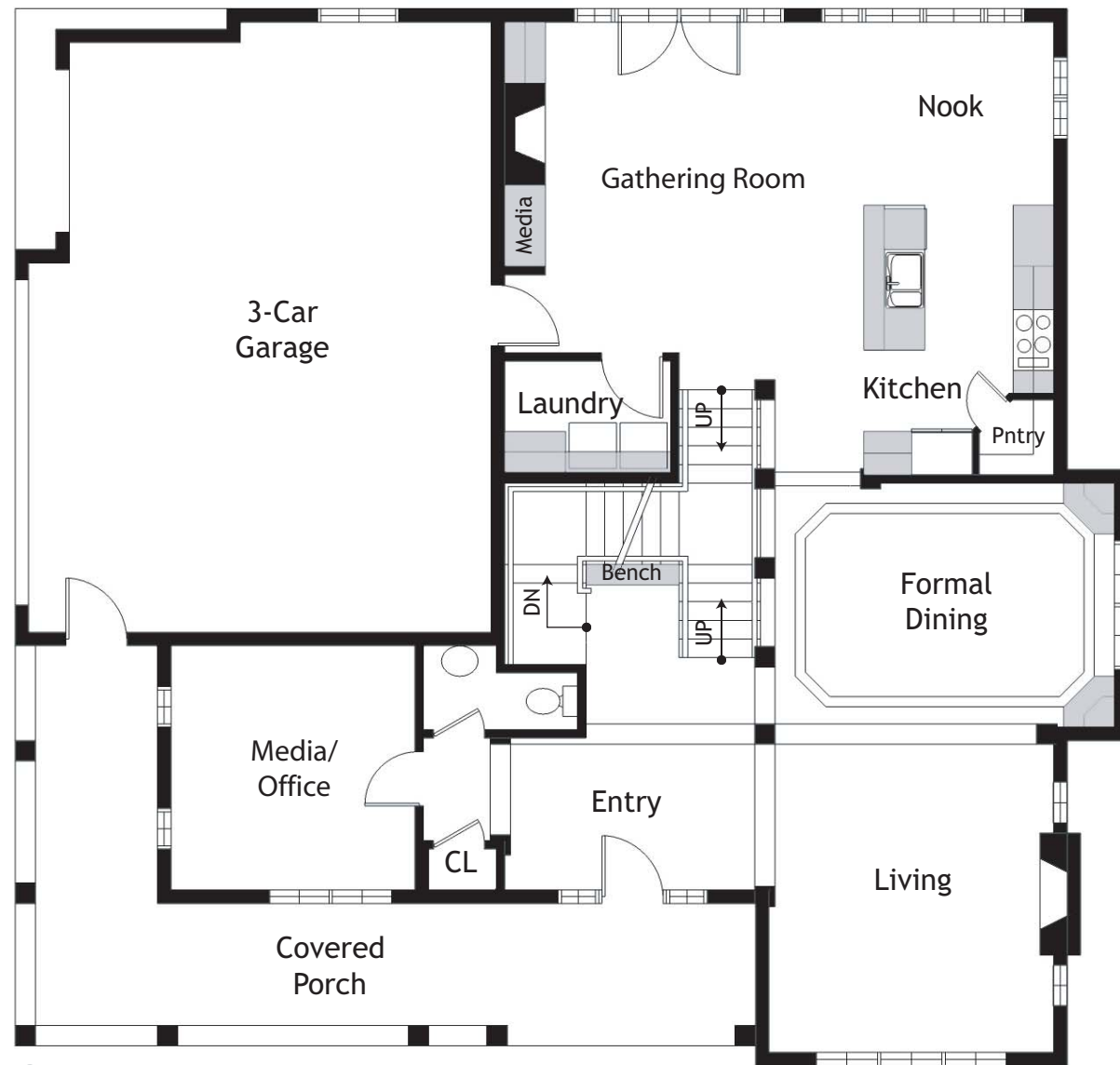


The Chestnut

4 Bedrooms
2.5 Baths
Media

2,630 s.f.

FIRST FLOOR

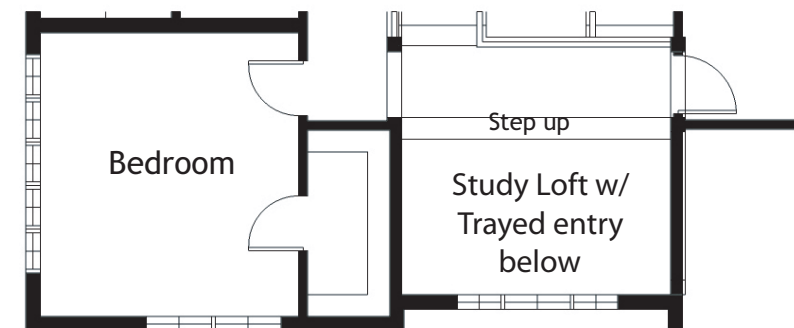


© SARAH NURMELA 2007

SECOND FLOOR



STUDY LOFT OPTION



Traditional Elevation



Pangea Development, LLC.

A WORLD OF DIFFERENCE

9748 Stein Road
Mascoutah, IL 62258

The Estates at PALMER CREEK

SARAH NURMELA
Architecture + Planning
428 Alice Street #729
Oakland, California 94607
510-919-8455